

Architecture - Interior Design - Landscape Design  
 Brand Activation - Wayfinding - Product Design  
 Event - Urban Design - Process Design Build

4800 Main Street, Suite 300  
 Kansas City, MO 64112  
 816.221.1500

STRUCTURAL  
 Walker F. Moore  
 201 East Kennedy Boulevard, Suite 300  
 Tampa, FL 33602  
 813.221.2424

MEPT  
 ME Engineers  
 1413 Denver West Parkway, Suite 300  
 Golden, CO 80401  
 303.421.6665

CIVIL  
 GROUP  
 1625 Summit Lake Drive, Suite 200  
 Tallahassee, FL 32317  
 905.962.9600

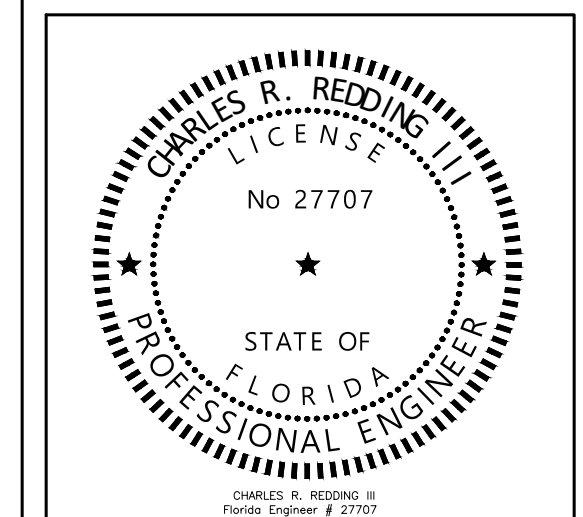
LIFE SAFETY  
 Howe Engineers  
 141 Longwater Drive, Suite 110  
 Norwell, MA 02061  
 781.878.1550

AV / ACOUSTICAL  
 WISBY  
 3424 Meador Road, Suite 124  
 Carrollton, TX 75006  
 972.834.3700

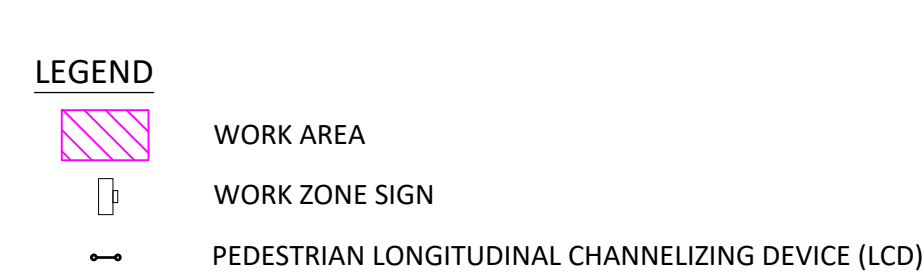
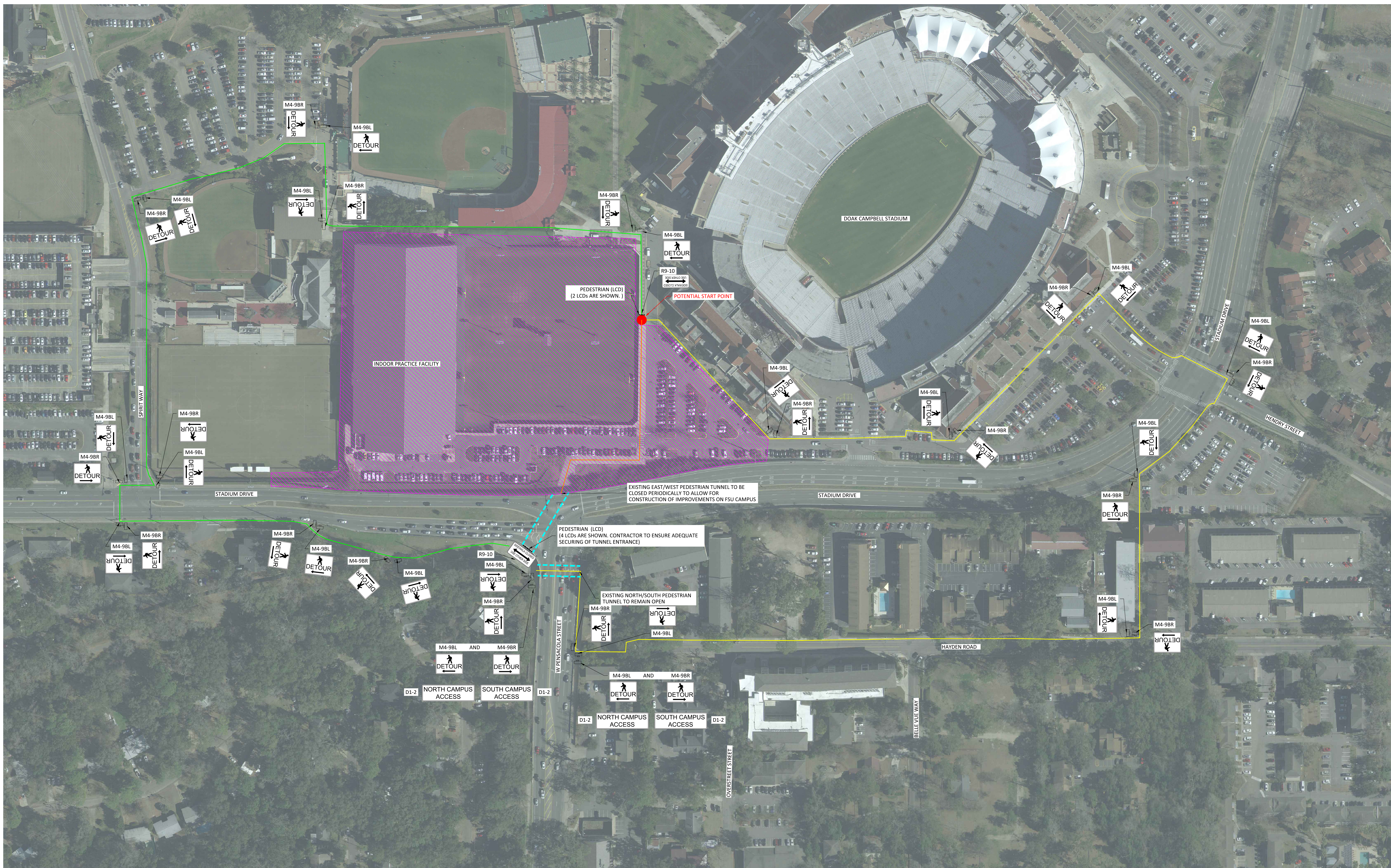
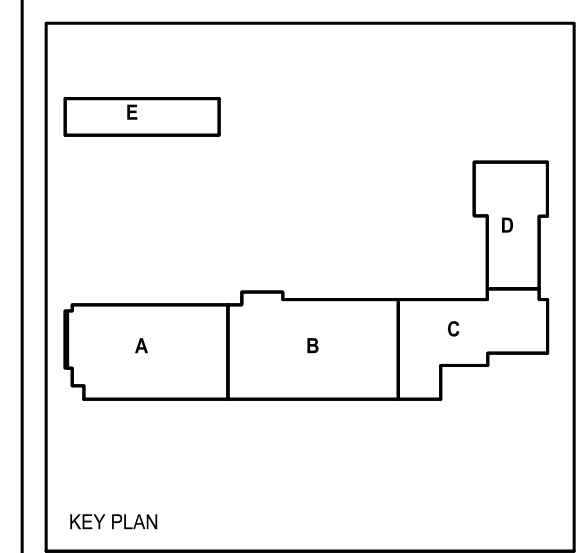
AQUATICS  
 Aquatic Design Consultants  
 2340 Oak Valley Rd.  
 Leesburg, FL 34603  
 954.937.9525

FOOD SERVICE  
 S&S  
 530 N. Wood Street, Unit C  
 Chicago, IL 60602  
 224.717.1999

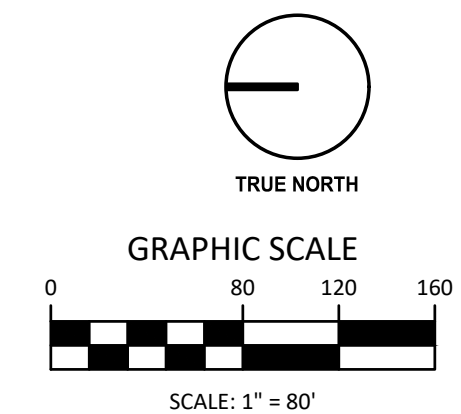
LANDSCAPE  
 Moore Bates  
 851 North Golden Street  
 Tallahassee, FL 32303  
 850.222.5676



NO.	DATE	DESCRIPTION



- NOTES:**
1. PLACE PEDESTRIAN LONGITUDINAL CHANNELIZING DEVICE (LCD) ACROSS THE FULL WIDTH OF THE CLOSED SIDEWALK.
  2. FOR POST MOUNTED SIGNS LOCATED NEAR OR ADJACENT TO A SIDEWALK, MAINTAIN A MINIMUM 7" CLEARANCE FROM THE BOTTOM OF THE SIGN PANEL TO THE SURFACE OF THE SIDEWALK.
  3. "SIDEWALK CLOSED" SIGNS (R9-XX) MAY BE MOUNTED ON PEDESTRIAN LCDs IN ACCORDANCE WITH THE MANUFACTURER'S INSTRUCTIONS.
  4. OMIT THE ADVANCE CLOSURE LCD IF IT BLOCKS ACCESS TO OTHER PEDESTRIAN FACILITIES (E.G. TRANSIT STOPS, RESIDENCES, OR BUSINESS ENTRANCES).
  5. SEE FDOT STANDARD PLANS 102-660 SERIES FOR MORE DETAILS.
  6. WORK ZONE SIGN LOCATIONS ARE FOR INFORMATION PURPOSES ONLY. ACTUAL LOCATION MAY BE ADJUSTED AS APPROPRIATE BY CONTRACTOR TO ACHIEVE INTENT OF PLANS AND ACCOUNT FOR SITE CONDITIONS.
  7. CONTRACTOR SHALL COORDINATE CLOSURE OF THE EAST/WEST PEDESTRIAN TUNNEL WITH FDOT, FSU, LOCAL LAW ENFORCEMENT AND OTHER AFFECTED PARTIES.



PROJECT NAME  
**FSU FOOTBALL OPERATIONS FACILITY**

ISSUED NAME  
**CONSTRUCTION DOCUMENTS**

ISSUED DATE  
 08/24/2023

ISSUED BY  
 POPULOUS

PROJECT NUMBER  
 21.5384

SHEET SIZE  
 E

**PEDESTRIAN DETOUR ROUTING - SIDEWALK CLOSURE**

SHEET NUMBER  
**FDOT-3**